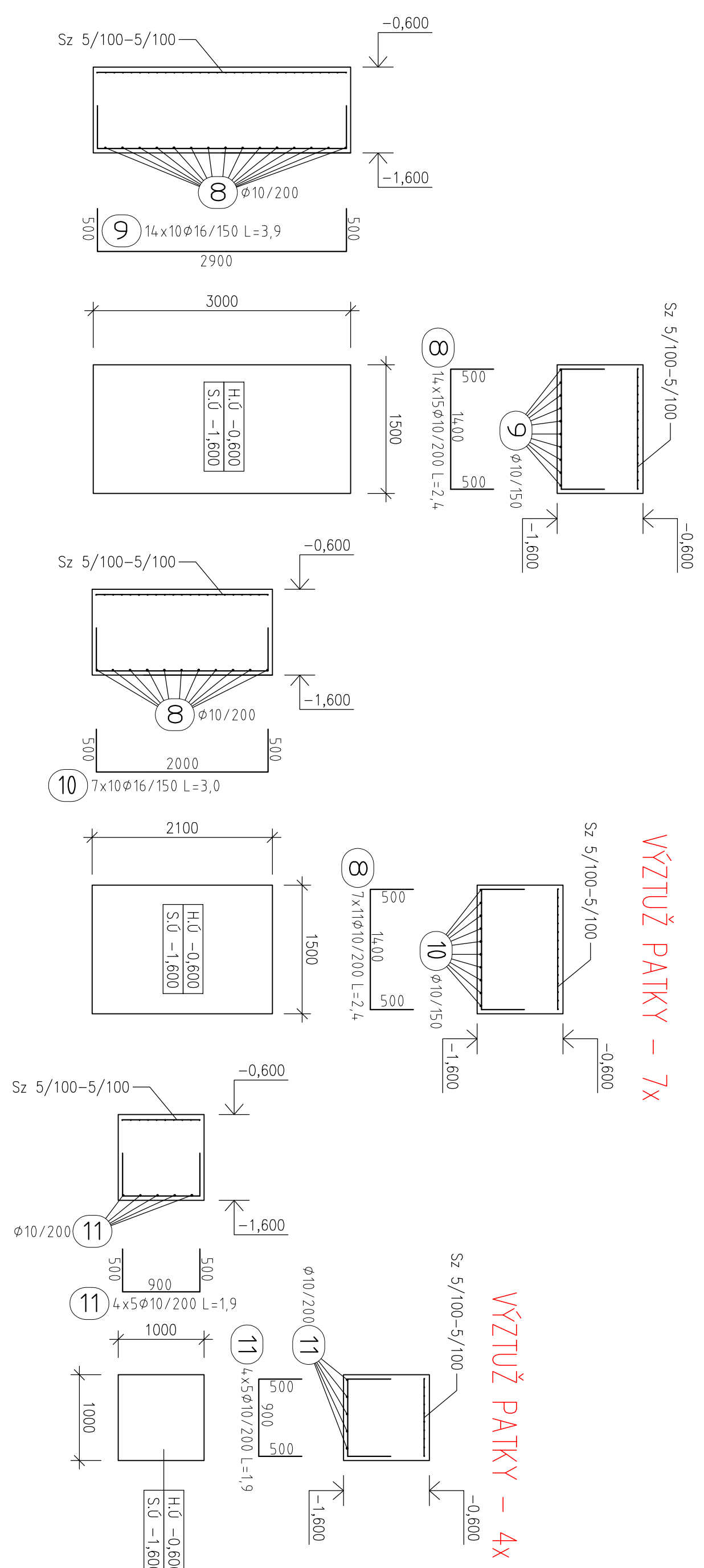
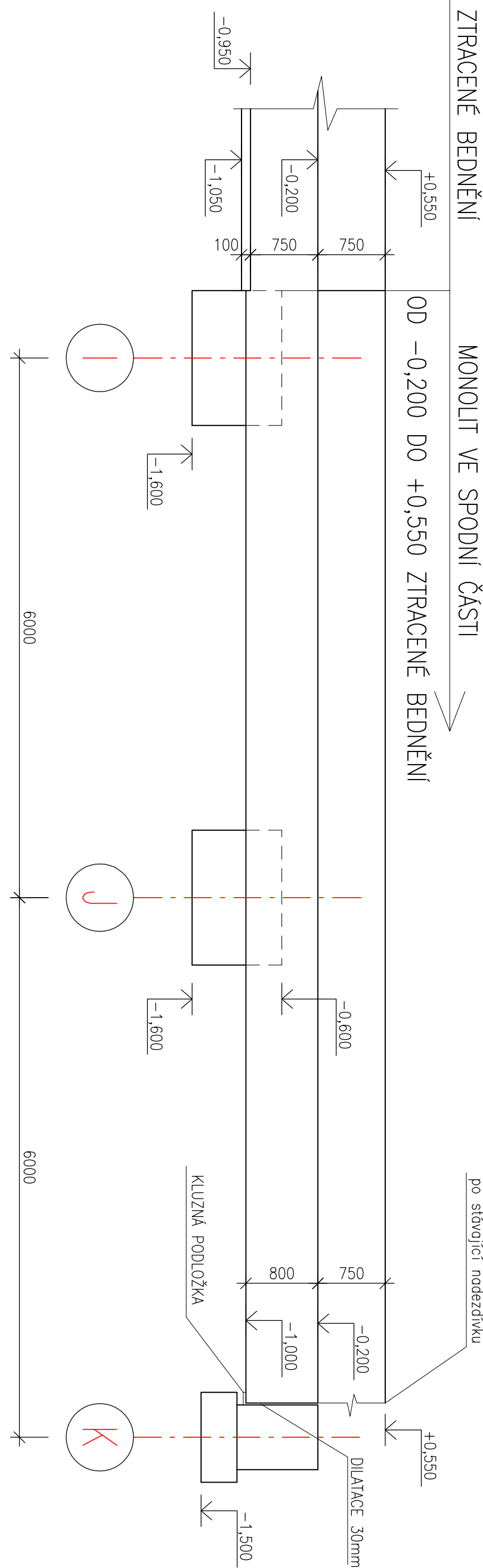


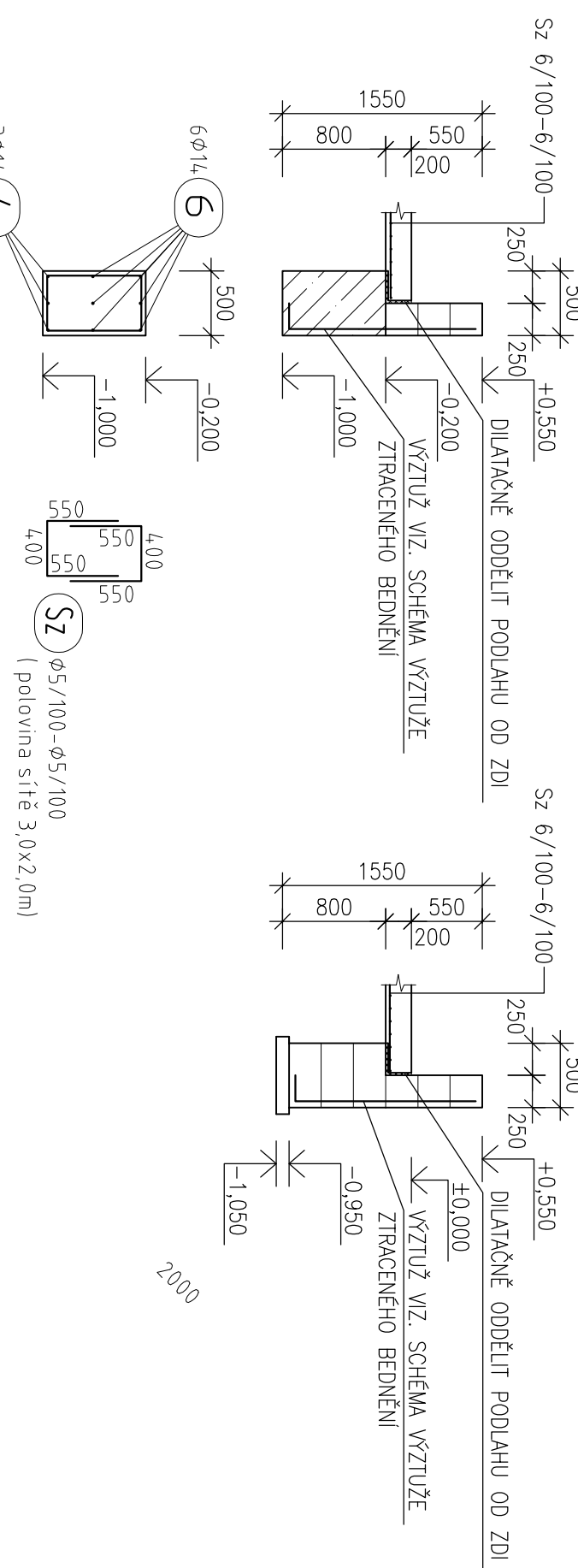
## VÝZTUŽ PÁTKY – 14x



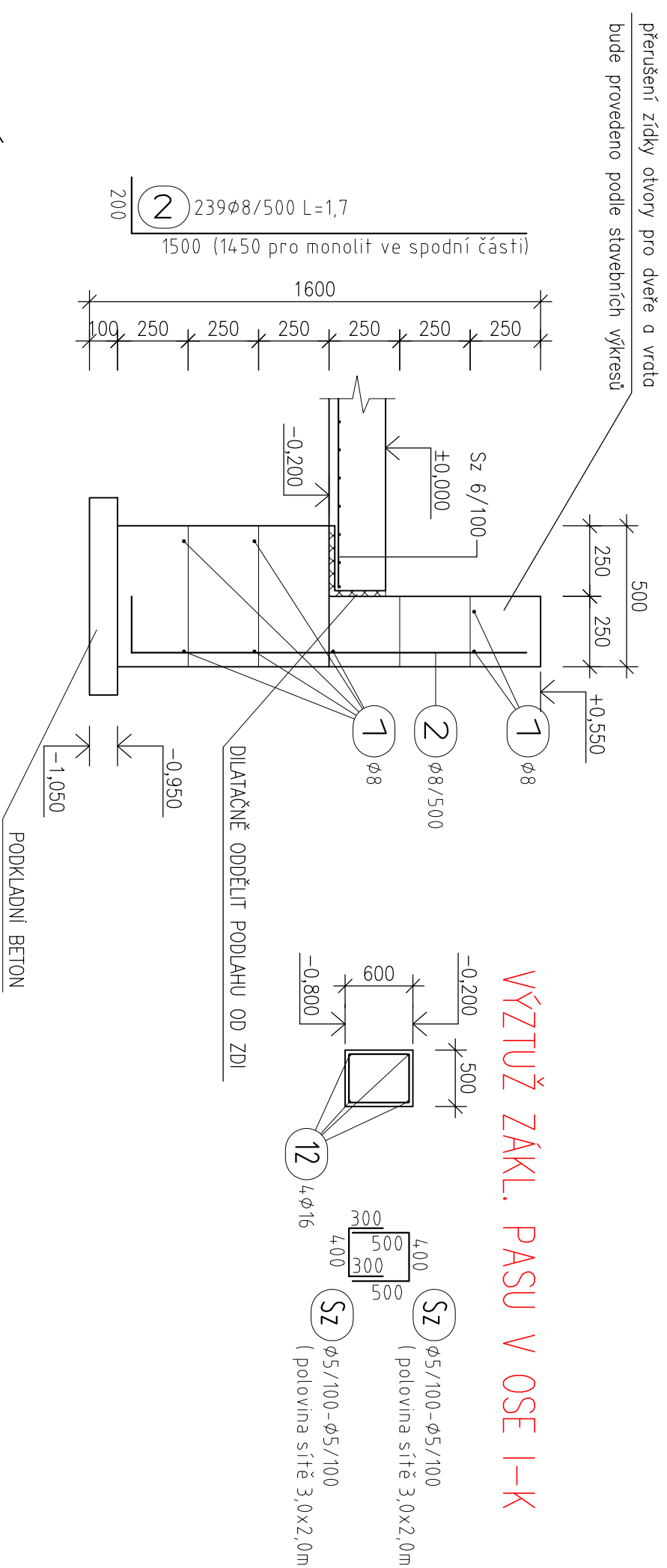
## POHLED NA OSU 1



MONOLIT VE SPODNÍ ČÁSTI



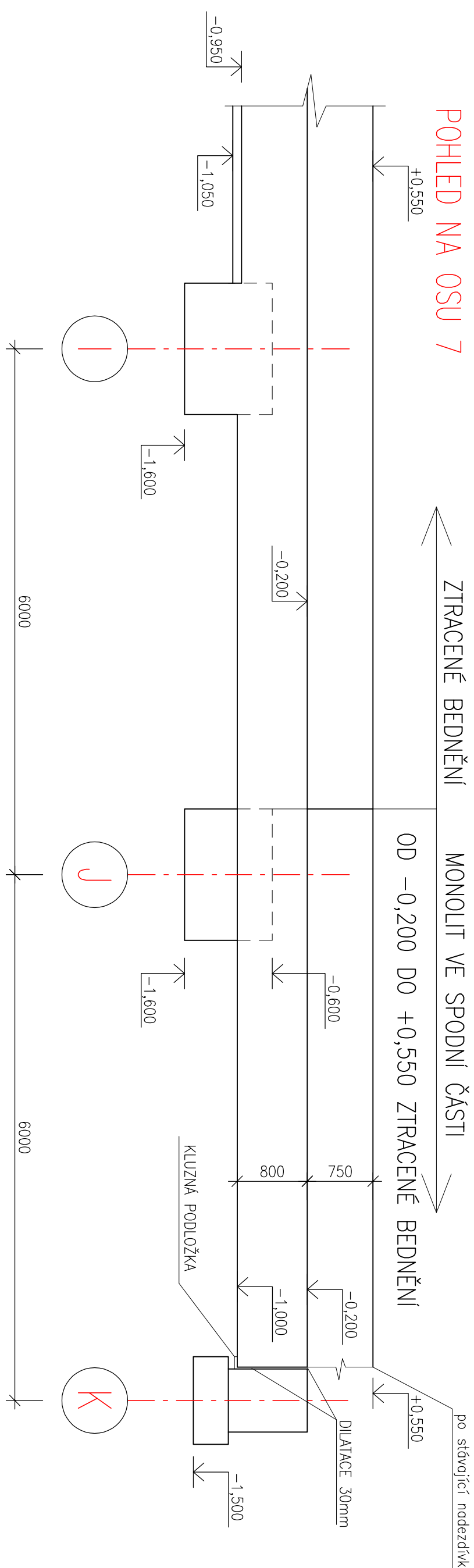
SCHEMA VÝZTUŽE ZTRACENÉHO BEDNĚNÍ (M 1:20)



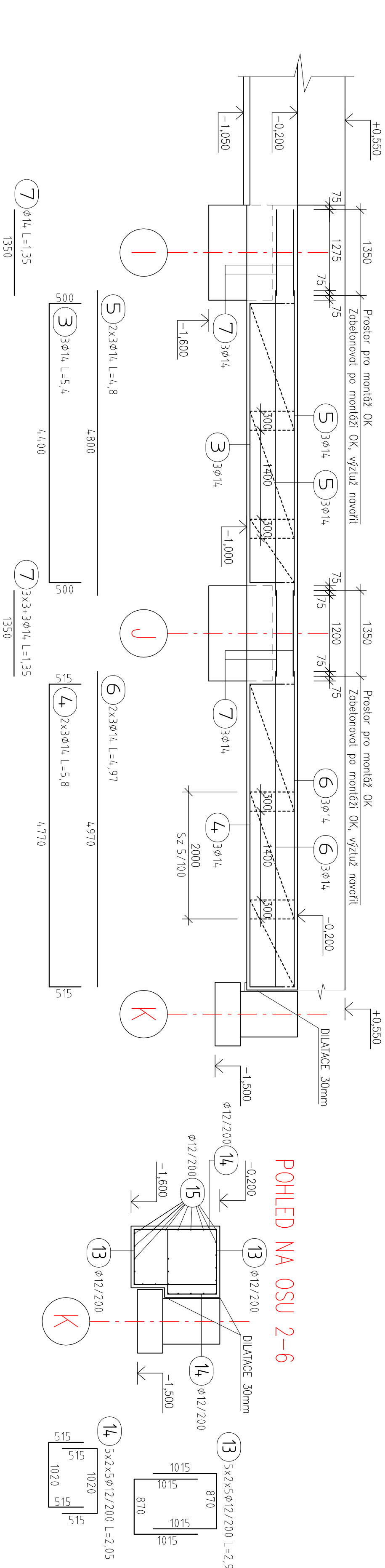
## VÝKAZ PRO PATKY, PASY

Pol.	KS	Ø	Jednot. [m]	Celkem [m]	Hmotn. [kg]	Hmotnosti podle profilů [kg]					Hmotn. [kg]	
						Ø 8	Ø 10	Ø 12	Ø 14	Ø 16		s2 2/100
1	Rozd.	8	-	1186,0	0,395	468,17						
2	239	8	1,7	4,06,3	0,395							
3	14	14	5,4	16,2	1,210	160,48			19,60			
4	6	14	5,8	34,8	1,210				4,210			
5	6	14	4,8	28,8	1,210				34,84			
6	14	14	4,97	29,82	1,210				36,08			
7	18	14	1,35	24,3	1,210				29,40			
8	287	10	2,4	688,8	0,617	424,98						
9	14,0	16	3,9	546,0	1,578							
10	70	16	3,0	210,0	1,578							
11	40	10	1,9	76,0	0,617				46,89			
12	Rozd.	16	-	85,0	1,578				128,76			
13	50	12	2,9	145,0	0,888				67,48			
14	40	10	1,9	76,0	0,888				111,0			
15	Rozd.	12	-	125,0	0,888							
Sz	-	5	3,0x2,0	233,0 <sup>m</sup>	3,08kg/m <sup>2</sup>	629,0	4,172,0	308,0	16x2,0	1328,0	715,0	714,56
Celková hmotnost						629,0	4,172,0	308,0	16x2,0	1328,0	715,0	3614,0

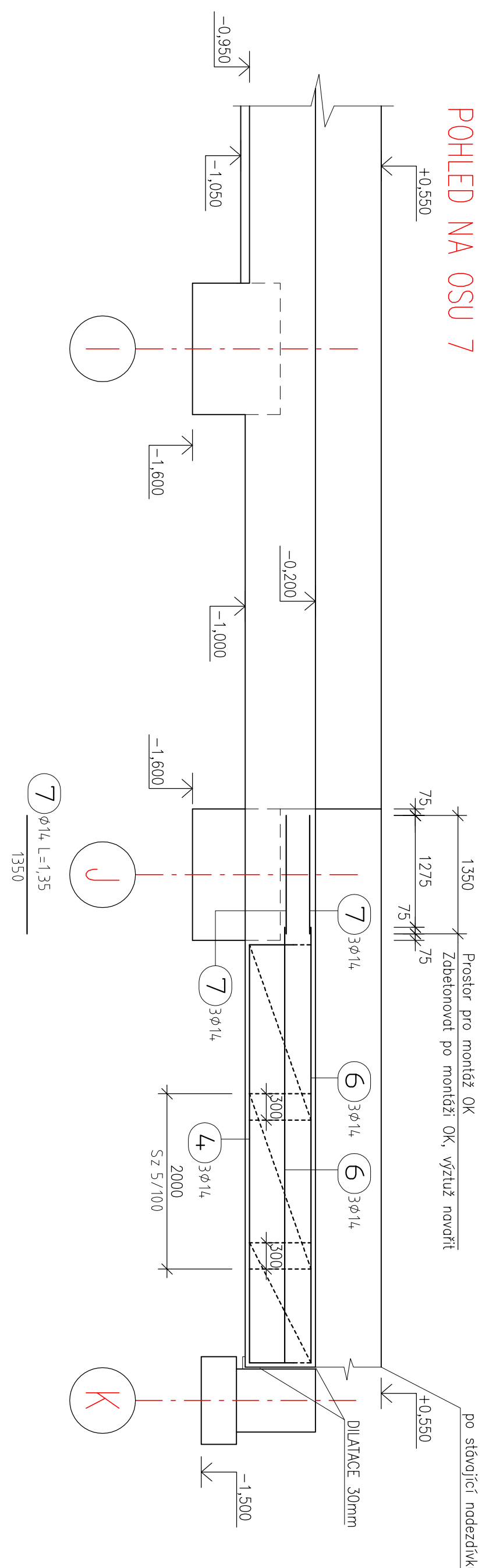
## POHLED NA OSU 1



## POHLED NA OSU 2-6



## POHLED NA OSU 7

[illegible]